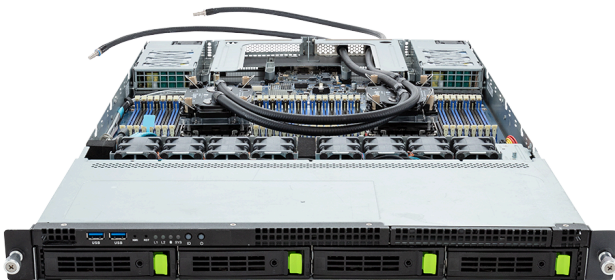
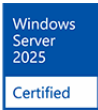
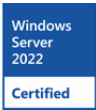


# R183-S90-LAD1

Rack Server - 5th/4th Gen Intel® Xeon® Scalable -  
1U DP 4-Bay Gen4 NVMe/SATA/SAS DLC



### Key Features

- Direct liquid cooling solution
- Dual 5th/4th Gen Intel® Xeon® Scalable Processors
- Dual Intel® Xeon® CPU Max Series
- 8-Channel DDR5 RDIMM, 32 x DIMMs
- 2 x 1Gb/s LAN ports via Intel® I350-AM2
- 4 x 3.5"/2.5" Gen4 NVMe/SATA/SAS hot-swap bays
- 1 x FHHL PCIe Gen5 x16 slot
- 2 x OCP NIC 3.0 PCIe Gen5 x16 slots
- 1+1 1600W 80 PLUS Platinum redundant power supplies

### Applications

Networks Server, Servers for Hybrid/Private Cloud...

### Specification

Dimensions	1U (438 x 43.5 x 815 mm)	PCIe Expansion Slots	1 x FHHL PCIe Gen5 x16 2 x OCP NIC 3.0 PCIe Gen5 x16, Support NCSI
Motherboard	MS93-FS0	I/O Ports	Front: 2 x USB 3.2 Gen1 Rear: 2 x USB 3.2 Gen1, 1 x Mini-DP, 2 x RJ45, 1 x MLAN
CPU	5th Generation Intel® Xeon® Scalable Processors 4th Generation Intel® Xeon® Scalable Processors Intel® Xeon® CPU Max Series Dual processor, TDP up to 385W	Backplane Board	PCIe Gen4 x4 or SATA 6Gb/s or SAS 12Gb/s
OS Compatibility	<a href="#">OS Support List</a>	TPM	1 x TPM header (SPI), Optional TPM2.0 kit: CTM010
Socket	2 x LGA 4677 (Socket E)	Power Supply	1+1 1600W 80 PLUS Platinum redundant power supplies AC Input: 100-240V
Chipset	Intel® C741	System Fans	8 x 40x40x56mm (32,000rpm)
Memory	8-Channel DDR5 RDIMM, 32 x DIMMs [5th Gen Intel Xeon] Up to 5600 MT/s (1DPC), 4400 MT/s (2DPC) [4th Gen Intel Xeon] Up to 4800 MT/s (1DPC), 4400 MT/s (2DPC) [Intel Xeon Max Series] Up to 4800 MT/s (1DPC), 4400 MT/s (2DPC)	Operating Properties	Operating: 10°C to 35°C, 8% to 80% (non-condensing) Non-operating: -40°C to 60°C, 20% to 95% (non-condensing)  *To ensure system stability and prevent condensation, when the relative humidity exceeds 50%, the coolant inlet temperature must be higher than the dry-bulb temperature and it should not exceed 45°C.
LAN	2 x 1Gb/s LAN (1 x Intel® I350-AM2), Support NCSI 1 x 10/100/1000 Mbps Management LAN	Packaging Content	1 x R183-S90-LAD1 1 x CoolIT CPU cold plate loop 1 x Mini-DP to D-Sub cable 6 x Carriers 1 x 2-Section Rail kit
Video	Integrated in ASPEED® AST2600 - 1 x Mini-DP	Ordering Part Numbers	6NR183S90DR000LBD1*
Storage	Front hot-swap: 4 x 3.5"/2.5" Gen4 NVMe/SATA/SAS <sup>[1]</sup>  <sup>[1]</sup> SAS card is required to support SAS drives.	Optional Parts	- 3-Section Rail kit (Supports CMA): 25HB2-A56121-K0R - Cable Management Arm: 25HB1-R18300-K0R - Leak sensor board: 6NR183S90S1000LAD10
RAID	Intel® SATA RAID 0/1/10/5 Onboard VROC key header		



Learn more at: <https://www.gigabyte.com/Enterprise>  
\* All specifications are subject to change without notice. Please visit our website for the latest information.  
\* All trademarks and logos are the properties of their respective holders.  
© 2026 Giga Computing Technology Co., Ltd. All rights reserved.  
Last updated: Jan 27, 2026

Designed by

